

LEXINGTONS



FOR
SALE



Hillfield Court, London, NW3

A spacious and bright two-bedroom apartment presented in very good condition situated on the ground floor of this sought-after purpose built mansion block in the heart of Belsize Park.

This impressive flat is very well laid out with a wonderful sense of light and space comprising two double bedrooms, a large reception room, well equipped kitchen, stylish modern bathroom and a spacious entrance hall. The property further benefits from a 24 hour porter and attractive communal gardens creating a wonderful tranquil feeling in this central location.

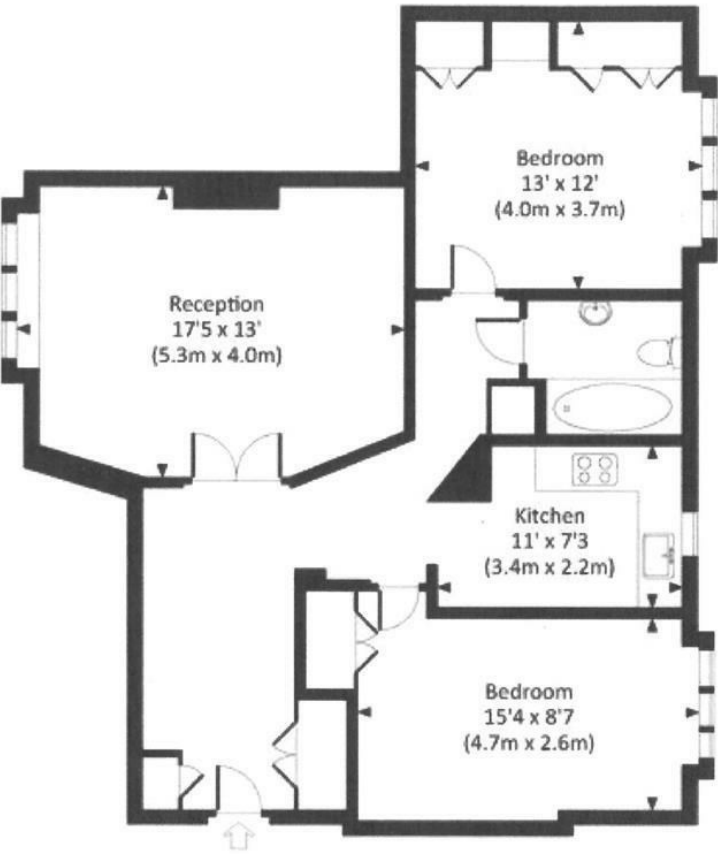
Hillfield Court is ideally located at the top of Belsize Avenue offering convenient access to the Royal Free Hospital as well as many shops, restaurants and cafes to enjoy. Belsize Park Station is just a short walk away (Northern Line).

- Mansion portered block
- Two double bedroom
- Communal heating and hot water
- Walking distance to Belsize Park underground station
- Located on ground floor
- Communal gardens
- Modern bathroom

Asking Price £799,000

Floorplan for 2 bedroom ground floor flat for sale

HILLFIELD COURT, NW3
Approx. gross internal area
847 Sq.Ft. / 78.7 Sq.M.



GROUND FLOOR



Energy Efficiency Rating		
	Current	Potential
Very energy efficient - lower running costs		
(92 plus) A		
(81-91) B		
(69-80) C		
(55-68) D		
(39-54) E		
(21-38) F		
(1-20) G		
Not energy efficient - higher running costs		
England & Wales	EU Directive 2002/91/EC	

Environmental Impact (CO ₂) Rating		
	Current	Potential
Very environmentally friendly - lower CO ₂ emissions		
(92 plus) A		
(81-91) B		
(69-80) C		
(55-68) D		
(39-54) E		
(21-38) F		
(1-20) G		
Not environmentally friendly - higher CO ₂ emissions		
England & Wales	EU Directive 2002/91/EC	